



ENDOCRINOLOGY

A RESOURCE GUIDE

WELCOME!

The purpose of this guide is to help you navigate the plethora of endocrinology-related resources available to you through Harbor-UCLA's medical library.

In this guide, you will find links to:

- Online journals and books in our collection
- Professional associations
- Medical Images

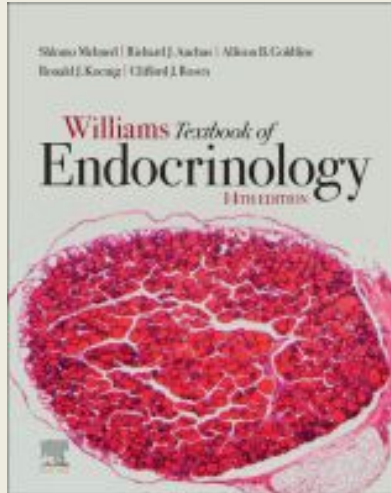
ONLINE JOURNALS

Search the library's catalog for more!

- [Endocrinology](#)
- [Endocrinology and Metabolism Clinics of North America](#)
- [Clinical Endocrinology](#)
- [Best Practice & Research. Clinical endocrinology & Metabolism](#)
- [Endocrine Reviews](#)
- [European Journal of Endocrinology](#)
- [Journal of Clinical Endocrinology & Metabolism](#)
- [Journal of Endocrinology](#)
- [Journal of Pediatric Endocrinology & Metabolism: JPEM](#)
- [The Lancet. Diabetes & Endocrinology](#)
- [Trends in Endocrinology and Metabolism: TEM](#)
- [Current Opinion in Endocrinology, Diabetes, & Obesity](#)

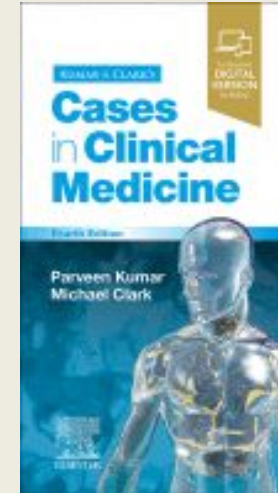
EBOOKS

Search the library's catalog for more!



Williams Textbook of Endocrinology, 14th Ed.

By Melmed, Shlomo, MB ChB, MACP
2020



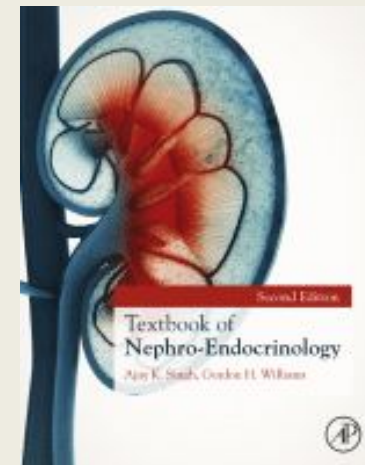
Kumar & Clark's Cases in Clinical Medicine, 4th Ed.

By Kumar, Dame Parveen J, Professor
2021



Yen & Jaffe's Reproductive Endocrinology, 8th Ed.

By Strauss, Jerome F., MD, PhD
2019

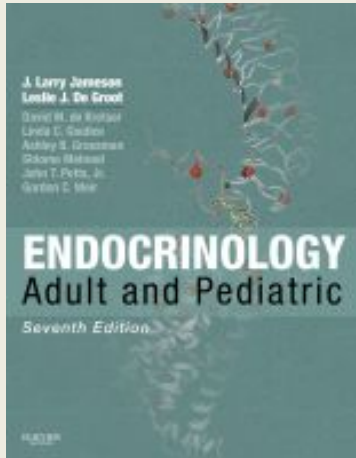


Textbook of Nephro-Endocrinology, 2nd Ed.

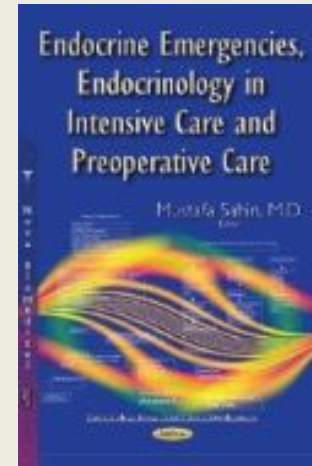
By Singh, Ajay K.
2018

EBOOKS

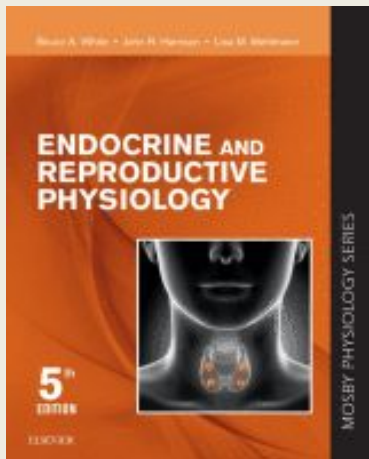
Search the library's catalog for more!



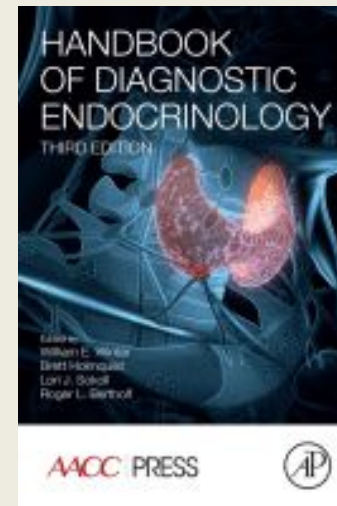
Endocrinology: Adult and Pediatric, 7th Ed.
By Jameson, J. Larry, MD, PhD
2016



Endocrine Emergencies, Endocrinology in Intensive Care and Preoperative Care
By Sahin, Mustafa
2015



Endocrine and Reproductive Physiology, 5th Ed.
By White, Bruce A., PhD
2019



Handbook of Diagnostic Endocrinology, Third Edition
By Winter, William E.
2021

PROFESSIONAL ORGANIZATIONS

- [AAACE](#)
- [Endocrine Society](#)
- [Society for Endocrinology](#)
- [American Diabetes Association](#)
- [Society for Reproductive Endocrinology & Infertility](#)
- [American Thyroid Association](#)

MEDICAL IMAGES

- [Endocrinology Pathology - University of Utah](#)
- [Images of Endocrine Disorders](#)
- [Endocrine Glands Color Images - University of Delaware](#)



CONTACT US

**Harbor-UCLA Medical Center
A. F. Parlow Library of Health
Sciences**

Phone: 424-306-6100

Email: libref@harbor-ucla.org